



# **Whitby 100 Long Distance Race**

**September 19-20, 2025**

**ORGANIZING AUTHORITY**

**RACE MANAGEMENT COMMITTEE OF THE  
WHITBY YACHT CLUB**

**Whitby 100 Sailing Instructions**

**(701 GORDON STREET, P.O.BOX 321, WHITBY, ONTARIO, CANADA L1N 5S4)**

**Web: <http://www.wycfleet.com>, Phone: (905) 668-1391, Fax: (905) 668-6007, Email: [fleet@wycfleet.com](mailto:fleet@wycfleet.com)**

The Event's Yacht Scoring Web Site is at  
<https://yachtscoring.com/emenu/50424>

## **1 RULES**

1.1 See Notice of Race (NoR).

## **2 CHANGES TO SAILING INSTRUCTIONS**

2.1 Any change to the sailing instructions will be posted to the [Official Notice Board](#) before 0900 on the day it will take effect, except that any change to the schedule of races will be posted by 2000 on the day before it will take effect.

## **3 COMMUNICATIONS WITH COMPETITORS**

3.1 Notices to competitors will be posted on the official notice board located at [Official Notice Board](#).

3.2 [DP] Radio Communications. Marine VHF Channel 71 Canadian shall be used by the Race Committee for radio communication during the race. Each sailboat shall monitor VHF Channel 71 from 30 minutes before her warning signal until one hour after her start, and from approximately one hour before finishing or 5 NM from the Finish, whichever ever occurs later, until 30 minutes after finishing.

3.3 Sailboats are encouraged to talk to other sailboats in the race on marine VHF channel 71 throughout the race, especially at 1000 and 2200 EDT.

3.4 Sailboats shall monitor marine VHF channel 16 at all other times.

## **4 SIGNALS MADE ASHORE**

4.1 Signals made ashore will be displayed on the flagpole located in the parking lot east of the clubhouse.

4.2 When flag AP is displayed ashore, '1 minute' is replaced with 'not less than 45 minutes'.

Whitby 100 Sailing Instructions

(701 GORDON STREET, P.O.BOX 321, WHITBY, ONTARIO, CANADA L1N 5S4)  
Web: <http://www.wycfleet.com>, Phone: (905) 668-1391, Fax: (905) 668-6007, Email: [fleet@wycfleet.com](mailto:fleet@wycfleet.com)

## 5 SCHEDULE OF RACES

The race will take place on 19 September 2025 with the first Warning Signal is scheduled for 1900hrs.

## 6 CLASSES AND ELIGIBILITY

6.1 PHRF-LO Spinnaker (FS) and PHRF-LO JAM (Jib and Main or NFS).

6.2 Participating boats will be split into PHRF-LO Spinnaker and JAM divisions. The division splits will be presented at the Skipper's Meeting and they will be posted on the [Official Notice Board](#).

## 7 RACING AREAS

Attachment A shows the location of the racing area.

## 8 THE COURSE

8.1 The diagrams in Attachment A shows the courses.

8.2 The Start will be between WYC Mark 9 (N 43° 49.708' W 78° 56.260') and the Signal Boat.

8.3 **PHRF Flying Sails.** Head Southwest to the NW Lake Ontario Ajax ODAS Buoy 45159 (43°46.2'N,78°58.8'W). Then head West Southwest to Toronto Harbour Outer Approach Light Spar Buoy T2 (N 43° 36.661' W 79° 20.78'). Head South Southwest Grimsby ODAS 45139 N 43° 15.538' W 079° 32.322'). Head North East to Oshawa Harbour Outer Marker MV2 Red spar (N 43° 51.398' W 78° 47.436'). Return to WYC Mark 9 (N 43° 49.708' W 78° 56.260') for the finish. Locations listed at Attachment A only as a reference of current information available at the creation of these instructions. All participants are advised to confirm all course mark locations.

8.4 **PHRF Non Flying Sails.** Head Southwest to the NW Lake Ontario Ajax ODAS Buoy 45159 (43°46.2'N,78°58.8'W). Then head West Southwest to Toronto Harbour Outer Approach Light Spar Buoy T2 (N 43° 36.661' W 79° 20.78'). Head South Southwest Grimsby ODAS 45139 N 43° 15.538' W 079° 32.322'). Return North East to WYC Mark 9 (N 43° 49.708' W 78° 56.260') for the finish. Locations listed at Attachment A only as a reference of current information available at the creation of these instructions. All participants are advised to confirm all course mark locations.

Whitby 100 Sailing Instructions

(701 GORDON STREET, P.O.BOX 321, WHITBY, ONTARIO, CANADA L1N 5S4)  
Web: <http://www.wycfleet.com>, Phone: (905) 668-1391, Fax: (905) 668-6007, Email: [fleet@wycfleet.com](mailto:fleet@wycfleet.com)

8.5 Courses will not be shortened. This changes RRS 32.

## **9 MARKS**

9.1 The Start Mark is a tethered polyethylene barrel painted yellow with a blue number 9 painted in three places. The mark will be illuminated at the start. Locations of the marks are listed in the NoR.

9.2 All rounding marks will be left to port, except Turn 1, which is left to starboard.

9.3 The rounding marks are not managed by WYC. Absence of a rounding mark will not be grounds for redress. This changes rule 62.1 (a).

9.4 Marks as listed, in attachment A, should be at the identified latitude and longitude location. If a mark is not at the identified latitude and longitude location, or otherwise cannot be seen due to poor visibility, then the sailboat shall round the identified latitude and longitude location as indicated in the Sailing Instructions and continue with the race.

9.5 [DP] A record shall be entered in the sailboat's log detailing the timeline and efforts made to find the mark and the time that the mark's identified latitude and longitude was deemed to have been rounded. This record must be submitted as per the Notice of Race (NoR).

## **10 THE START**

10.1 Races will be started by using RRS 26 with the warning signal made five minutes before the starting signal.

10.2 The starting line will be between WYC Mark 9 to port and the staff or halyard carrying an orange flag on the race committee vessel to starboard.

10.3 There will be an interval of at least one minute between the start of one class and the warning signal for the next class.

10.4 Boats whose warning signal has not been made shall keep clear of the starting area during the starting sequence for other classes.

10.5 Divisions may be started together at the discretion of the race committee. If it intends to start more than one division together, the race

committee will announce its intentions by radio no later than five minutes before the earliest warning signal for the divisions involved.

10.6 The race committee may announce the sail numbers or boat names of premature starters by VHF. Failure to make an announcement, the timing of the announcement, or the order in which boats are announced shall not be grounds for redress. This changes rule 62.1 (a).

10.7 No boat shall hoist its spinnaker until the boat has started and cleared the starting line.

## **11 THE FINISH**

11.1 The finishing line will be between WYC Mark 9 to port and the halyard or staff displaying a blue flag on the race committee vessel to starboard.

11.2 If there is no race committee vessel on station at the finish, boats shall finish within two boat lengths of WYC mark 9 to port, record the GPS time as their primary winches pass the mark, and report their finish time to the race committee by text message at (905) 441-8655 or email to [wycfleet2@gmail.com](mailto:wycfleet2@gmail.com) within 90 minutes of finishing. Messages or email shall include boat name, sail number and time of finish.

## **12 PENALTY SYSTEM**

The One-Turn and Two-Turns penalties as specified in RRS 44 will apply.

## **13 TIME LIMIT**

The time limit will be 1900 September 20 2025. Any boat that has not finished by the time limit will be scored DNF, without a hearing. This changes rule A5.

## **14 PROTESTS**

14.1 Protest forms will be available on the [Official Notice Board](#) and submitted within the appropriate time limit.

14.2 The protest time limit will be 90 minutes after the protesting boat finishes.

Whitby 100 Sailing Instructions

(701 GORDON STREET, P.O.BOX 321, WHITBY, ONTARIO, CANADA L1N 5S4)  
Web: <http://www.wycfleet.com>, Phone: (905) 668-1391, Fax: (905) 668-6007, Email: [fleet@wycfleet.com](mailto:fleet@wycfleet.com)

14.3 Protests will be scheduled and parties will be notified. Postings of Protest hearing on the [Official Notice Board](#) will constitute the notice provided for in Rule 63.2.

## **15 SCORING**

Scores as outlined in A4.1 (low point scoring system) will apply (see RRS Rule A4.1).

## **16 RADIO COMMUNICATION**

The Race Committee will use VHF Channel 71 for this event.

## **17 SAFETY**

17.1 All boats shall comply with the applicable equipment Regulations of the Government Agencies in their country of registration. Crew is the sole responsibility of the owner(s) and/or skipper who must ensure that the boat is sound, thoroughly seaworthy, manned by experienced crew and adequately insured. He/she must be satisfied as to the soundness of the hull, spars, rigging, sails and gear. He/she must ensure that all safety equipment is properly maintained and stowed and that the crew is familiar with its location and use.

17.2 It is the sole responsibility of the skipper of each boat to decide whether or not to start, continue in or retire from a race. By starting any particular race the skipper accepts to abide by the sailing instructions.

17.4 A boat that retires from the race shall inform the race committee as soon as practicable by VHF channel 71. If a boat cannot reach the race committee by VHF, she shall report by text to (905) 441-8655 or email [wycfleet2@gmail.com](mailto:wycfleet2@gmail.com).

17.3 Boats that have not finished by 1700 are asked to report their status to the race committee by VHF. If a boat cannot reach the race committee by VHF, she is asked to report by telephone to (905) 441-8655.

17.4 Boats may check in with the Race Committee at any time during the race to advise the Race Committee of their position at 905-441-8655 or the email address of [wycfleet2@gmail.com](mailto:wycfleet2@gmail.com).

17.5[DP] All boats racing shall maintain a log of significant events, mark rounding, calls to the Coast Guard or similar organization, and engine on and off, with reason. This record shall be provided as per Notice of Race (NoR).

17.5 Emergencies calls for assistance shall be to the Coast Guard at VHF channel 16, or to police via telephone 911.

## 19 EQUIPMENT AND MEASUREMENT CHECKS

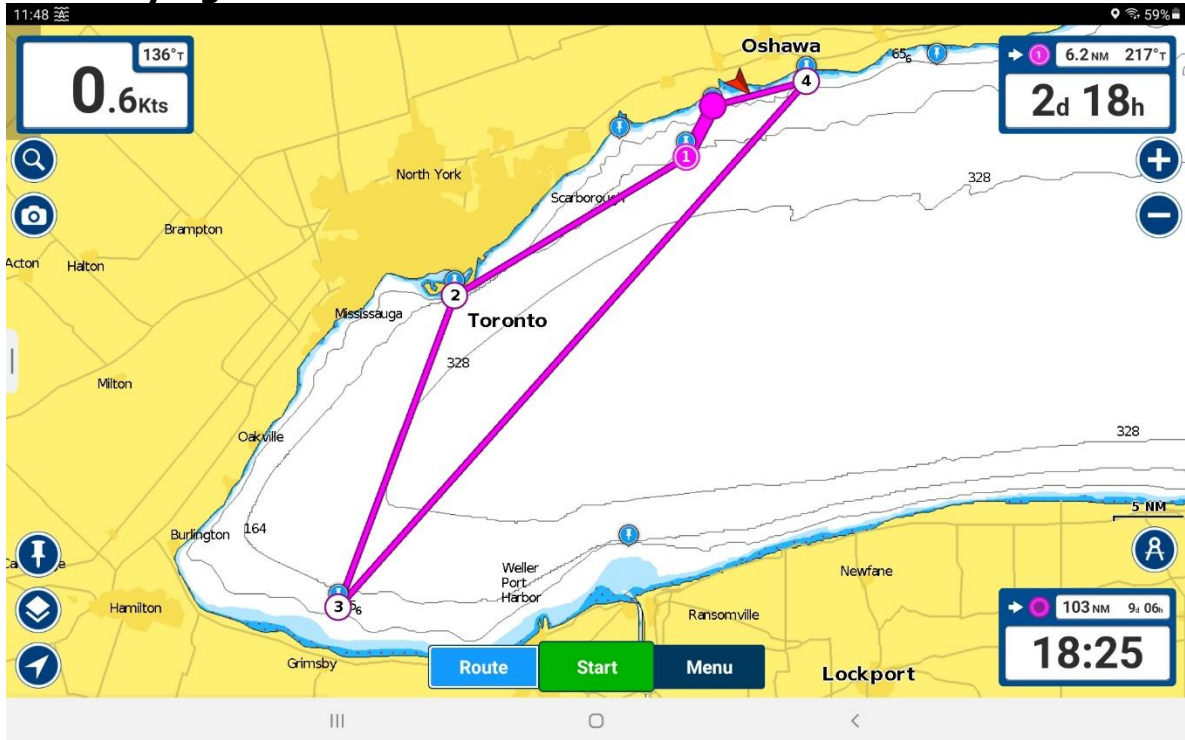
[NP] [DP] A boat may be inspected at any time during the period from the Mandatory Participants' Meeting until three hours after her finish. The Race Committee may, at the finish of the race, direct a boat to proceed directly to a designated location at Port Credit Yacht Club. A boat which fails to follow such directions, or which subsequently fails the inspection may be protested by the Technical Committee.

## 20 PRIZES

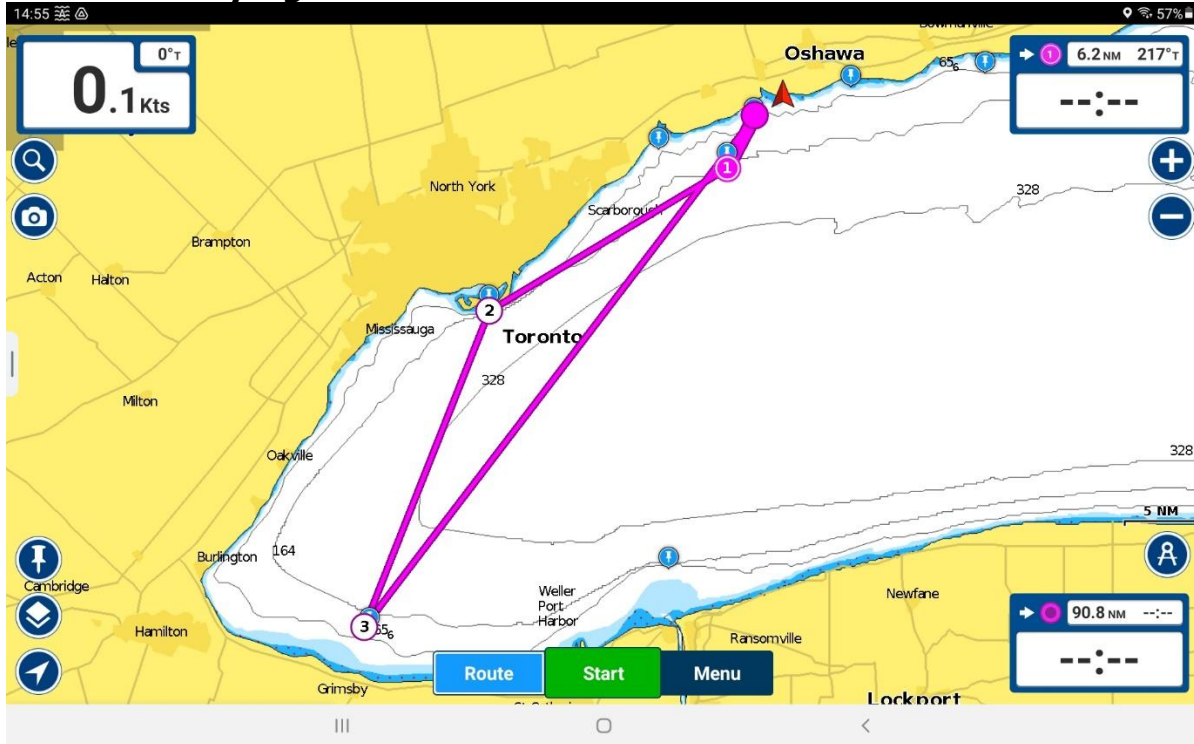
Prizes will be given as listed on the NoR.

# Attachment A Course Diagrams

## PHRF Flying Sails



## PHRF Non Flying Sails



### Whitby 100 Sailing Instructions

(701 GORDON STREET, P.O.BOX 321, WHITBY, ONTARIO, CANADA L1N 5S4)  
Web: <http://www.wycfleet.com>, Phone: (905) 668-1391, Fax: (905) 668-6007, Email: [fleet@wycfleet.com](mailto:fleet@wycfleet.com)