



**NIANTIC BAY YACHT CLUB
2025 YACHTOBER FEST REGATTA
SUNDAY OCTOBER 5, 2025**



SAILING INSTRUCTIONS (SIs)

1. RULES

- 1.1. This event will be governed by the rules as defined in the current Racing Rules of Sailing and the ECSA PHRF Regulations.
- 1.2. The scoring will not exclude any race. This modifies RRS A2.1.
- 1.3. Rule 60.4(a)(2) is changed to read "...was not involved in it AND did not see..." (word 'or' is changed to 'and').

2. CHANGES TO SAILING INSTRUCTIONS

- 2.1. Any change to the sailing instructions will be posted to the official notice board [Yachtober Fest - YachtScoring.com](https://www.yachtoberfest.com) before 2000 hours on Saturday October 4th.

3. COMMUNICATION WITH COMPETITORS

- 3.1. Notices to competitors, including changes to the Sailing Instructions will be posted on the official notice board located on [Yachtober Fest - YachtScoring.com](https://www.yachtoberfest.com).
- 3.2. On the water, the Race Committee (RC) intends to monitor and communicate with competitors via VHF radio on channel 68.
- 3.3. Failure of the RC or a competitor to hear or understand any radio message described in these instructions or otherwise shall not constitute grounds for redress, this changes rule 61.4(b).
- 3.4. [DP] While racing, except in an emergency, a boat shall not make voice or data transmissions and shall not receive voice or data communication that is not available to all boats.






4. SIGNALS MADE ASHORE

- 4.1. Signals made ashore will be displayed on the NBYC flagpole.
- 4.2. When flag AP is displayed ashore '1 minute' is replaced with 'not less than 30 minutes' in Race Signals AP.

5. SCHEDULE OF RACES

- 5.1. First warning: 1100 Sunday October 5th, 2025. Subsequent classes' warnings will follow as soon as practicable after the previous class's start.
- 5.2. [DP] Competitors shall check-in with the Race Committee prior to the warning of the first race by sailing past the stern of the RC Signal vessel and hailing their sail number.
- 5.3. No warning signals will be made after 1500.
- 5.4. A class flag flying at the conclusion of the first race indicates a second race is planned for that class. Any second race will also be identified on VHF 68.
- 5.5. PHRF classes will be specified on the scratch sheet.

5.6. The class flags will be:

- Class 1: Numerical Pennant "1" 
- Class 2: Numerical Pennant "2" 
- Class 3: Numerical Pennant "3" 
- Class 4: Numerical Pennant "4" 
- Class 5: Numerical Pennant "5" 

- (white background with red circle)
- (blue background with white circle)
- (red, white, blue vertical stripe)
- (red background with white cross)
- (yellow, blue vertical stripe)

6. COURSES

- 6.1. The course for each race for each Class will be posted on the signal board of the RC Signal boat.
- 6.2. The Class Flag will be displayed followed by a space, then the course for that class.
- 6.3. The last mark signaled will be the finish.
- 6.4. The courses will be displayed as the series of marks in the sequence in which they shall be rounded (i.e., "1 HW" means Class 1 starts, rounds H, FINISHES at W).
- 6.5. Any numeral inserted in the displayed course indicates the number of times the preceding sequence shall be repeated (i.e., AL2 means AL then AL again). Ditto (") marks mean; "same course as the course listed immediately above."
- 6.6. Leave all marks to Port EXCEPT if the mark is circled. CIRCLED marks are to be left to starboard.

7. MARKS

- 7.1. All boats shall pass to the east of C "7" Three Foot Rock. This buoy is an *obstruction*.
- 7.2. All boats shall pass to the west of White Rock island (the rocky island itself – not bell R "6"). This area is defined as an *obstruction*.
- 7.3. All drop marks will be orange or yellow inflatable marks. The starting mark may be a red inflatable mark.
- 7.4. The following marks are rounding marks:

Mark	Type	Description	North Deg	West Deg
B	Dropped	inflatable east of Black Point	See Diagram	See Diagram
C	Dropped	Inflatable north end of Niantic Bay	See Diagram	See Diagram
D	Dropped	Inflatable south of Millstone	See Diagram	See Diagram
E	Dropped	Inflatable west of Bartlett Reef	See Diagram	See Diagram
H	Fixed	C "1" North of Hatchett	41 16.23'	72 15.71'
M	Dropped	Inflatable between Black Point and Millstone	See Diagram	See Diagram
Q	Fixed	R "8" Bell south of CT River	41 14.85'	72 18.83'
S	Fixed	R "4" south of Bartlett Reef	41 15.57'	72 8.33'
W	Fixed	R "6" at White Rock	41 18.00'	72 10.47'
Z	Fixed	RW "PI" north of Plum Island	41 13.27'	72 10.78'

7.5. Appendix A is a diagram of the marks. Positions are approximate and the table above is the official position. Except in the case of a missing mark, the exact position of each mark shall not be grounds for redress. This changes rule 61.4.

8. THE START

- 8.1. The starting line is between the staff flying an orange flag on the RC Signal vessel and the course side of one of the marks B, C, D, E, M.
- 8.2. The starting mark referenced in 8.1 will be announced on VHF channel 68 a minimum of 15 minutes before the first start. Failure of a competitor to hear a radio message shall not constitute grounds for redress, this changes rule 61.4.
- 8.3. The starting sequence will be in the order displayed from the top to bottom of the signal board. Classes recalled will be restarted prior to starting the next class.
- 8.4. If any part of a boat's hull is on the course side of the starting line at her starting signal and she is identified, the RC will attempt to hail her sail number. Failure to hail her number, failure of her to hear such a hail, or the order in which boats are hailed shall not be grounds for redress. This changes RRS 61.4.

9. CHANGE OF THE NEXT LEG OF THE COURSE

- 9.1. To change the next leg of the course, the race committee (or a mark boat) will notify boats rounding the mark starting the changed leg by displaying code flag "Charlie" and making sound signals. This changes RRS 33.
- 9.2. The competitors will be notified of the new course by VHF radio channel 68. This changes RRS 33.
- 9.3. If appropriate and possible, the old mark will be removed. In the case that a drop mark is changed, and if possible, the new mark will be a different color than the original dropped mark. This changes RRS 33.

10. THE FINISH

The finish line will be between a staff flying a blue flag on the RC vessel and the course side of the final mark. Boats shall cross the line in the direction from the previous mark.

11. TIME LIMIT

- 11.1. The time limit for the first boat to properly sail the course and finish is 1700, regardless of class.
- 11.2. Any boat finishing any race later than 1745 will be scored TLE without a hearing. This changes RRS 35 and A5.1
- 11.3. Any boat that finishes more than 75 minutes after the first boat in her class finishes shall be scored TLE without a hearing. This changes RRS 35 and A5.1
- 11.4. Any boat scored TLE shall be awarded points equal to the number of boats in her class that finished properly plus 1. This changes RRS A5.1 and A5.2

12. HEARING REQUESTS

- 12.1. Protests and Requests for Redress shall be filed at the RC Signal Boat, electronically via email to pc@ccamail.com or on Yacht Scoring no later than one hour after the signal boat has docked. This time will be posted to the Notice Board on the Regatta Website.
- 12.2. Hearings will be scheduled at the earliest practical opportunity following receipt of a protest or request for redress. The Protest Committee may at its discretion hear the protest virtually.

12.3. The time of all hearings will be posted on the official notice board no later than 30 minutes before each hearing.

13. SAFETY REGULATIONS

[DP] A boat that retires from a race shall notify the RC at the first reasonable opportunity on VHF channel 68 or the NBYC Club office on VHF Channel 72 or 860-739-0558.

14. RISK STATEMENT

RRS 3 states: 'The responsibility for a boat's decision to participate in a race or to continue to race is hers alone.' By participating in this event each competitor agrees and acknowledges that sailing is a potentially dangerous activity with inherent risks. These risks include strong winds and rough seas, sudden changes in weather, failure of equipment, boat handling errors, poor seamanship by other boats, loss of balance on an unstable platform and fatigue resulting in increased risk of injury. Inherent in the sport of sailing is the risk of permanent, catastrophic injury or death by drowning, trauma, hypothermia or other causes.

15. CONTACT

Niantic Bay Yacht Club 8 Shore Road, Niantic, CT 06357

860-739-0558. The club (not the race committee) monitors VHF Channel 72.

Club and Event information is available at www.nbyc.org and [Yachtober Fest - YachtScoring.com](#)

OA / Regatta Chair: John Brousseau, shorelinecutter@aol.com

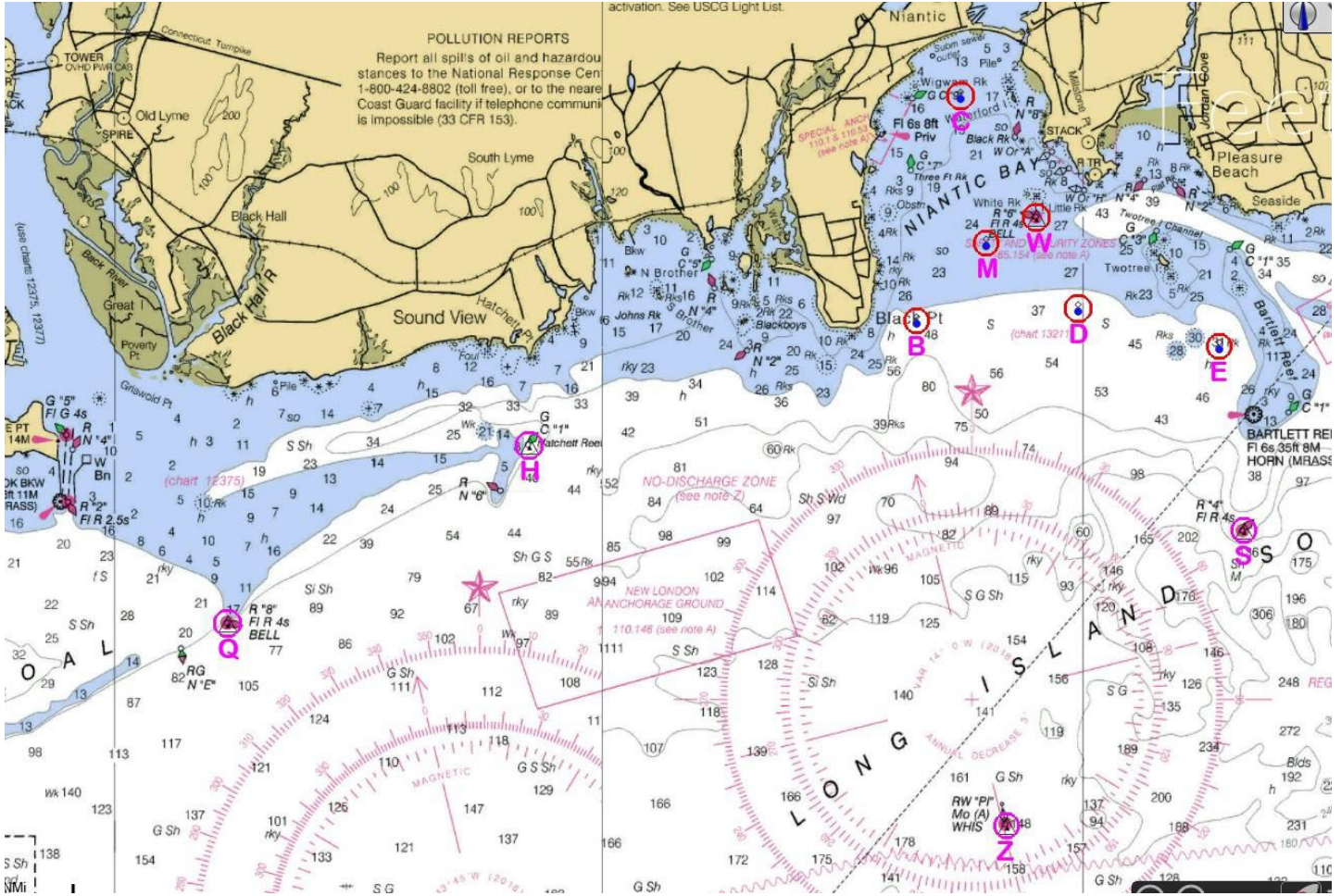
PRO: Greg Hall, protest.inbox.gjh@gmail.com

Club Manager: Pierre Bumgardner, manager@nbyc.com

860-739-0558

Protest Committee: Bob Cashman, pc@ccamail.com

16. APPENDIX A – COURSE DIAGRAM



The above chart is for visual reference of the marks. SI 8.4 gives the coordinates of each mark.

APPENDIX B – DISTANCES (all distances are approximate, differences in actual distances shall not be grounds for redress, this changes RRS 61.4(b))

to

nm	B	C	D	E	H	M	Q	S	W	Z
B		1.78	1.28	2.36	3.16	0.81	5.85	3.02	1.23	3.99
C	1.78		1.89	2.8	4.31	1.17	7.02	4.04	1.12	5.69
D	1.28	1.89		1.13	6.18	4.95	7.05	2.16	0.77	4.06
E	2.36	2.8	1.13		5.41	1.98	8	1.44	1.74	4.07
H	3.16	4.31	6.18	5.41		3.88	2.73	5.59	4.32	4.74
M	0.81	1.17	4.95	1.98	3.88		6.59	3	0.44	4.53
Q	5.85	7.02	7.05	8	2.73	6.59		7.93	7.03	6.26
S	3.02	4.04	2.16	1.44	5.59	3	7.93		2.92	2.95
W	1.23	1.12	0.77	1.74	4.32	0.44	7.03	2.92		4.73
Z	3.99	5.69	4.06	4.07	4.74	4.53	6.26	2.95	4.73	

Rocky Point and White Rock are accounted for in all calculations.