



2025-26 CYC/DBC **Fall Fling** GULF SERIES

Organizing Authorities: Clearwater Yacht Club, 830 Bayway Blvd, Clearwater, Florida and Dunedin Boat Club, 49 Marina Plaza, Dunedin, Florida

SAILING INSTRUCTIONS (SI)

Fall 9/6, 10/4, 11/15 (2025)

AMENDMENT 1: 10/02/25

The notation '(NP)' denotes that a breach of this rule will not be grounds for a protest by a boat. This is added to RRS 60.1.

The notation '(DP)' denotes that a breach of this rule will be grounds for a discretionary penalty. This is added to RRS 44.3.

1. RULES

- 1.1. The regatta will be governed by the rules as defined in the Racing Rules of Sailing (RRS) 2025- 2028 and West Florida PHRF (WF PHRF) Class Rules which may be found at www.westfloridaphrf.org.

2. COMMUNICATIONS WITH COMPETITORS

- 2.1. Notices to Competitors will be posted on the official notice board, which is located online at [Yacht Scoring regatta website](#). It is the responsibility of each competitor to check the Official Notice Board for any amendments or notices. It is recommended that all crew register their email address and "on the water" cell phone number to receive communications.
- 2.2. (NP) The race committee may communicate with competitors on Channel 72; however, failure of the race committee to transmit or failure of a boat to receive transmissions shall not be grounds for redress.
- 2.3. (DP) While racing, except in an emergency, a boat shall not make voice or data transmissions and shall not receive voice or data communication that is not available to all boats.

3. CHANGES TO SAILING INSTRUCTIONS

- 3.1. Any change in the sailing instructions will be posted before 0900 on the day it takes effect, except any change in the schedule of races will be posted by 2000 on the day before it takes effect.

4. SIGNALS MADE ASHORE

- 4.1. No signals will be displayed ashore.

5. SCHEDULE OF RACES

- 5.1. Saturday, 9/6/25, 10/4/25, 11/15/25.
- 5.2. First Warning – 1155 hrs.
- 5.3. No warnings shall be made after 1555.

6. CLASS FLAG

- Spinnaker - Code Flag Numeral 1
- Non-Spinnaker – Code Flag Numeral 1
- Racer/Cruiser – Code Flag Numeral 2
- Cruiser – Code Flag Numeral 3
- Fun Class – Code Flag Numeral 4

7. RACING AREA

- 7.1. The racing area will be in the Gulf, South of Clearwater #1, off of Sand Key. See Appendix A

8. THE COURSES

- 8.1. The attached diagram (Appendix A) shows the courses, the order in which the marks are to be passed. All marks shall be left to your port side.
- 8.2. All courses are either a simple triangle or a modified Olympic course.
- 8.3. No later than the warning signal, the Race Committee will display designated course letters and number on a board from the stern of the race committee signal boat, as well as announced on the VHF radio, channel 72. Race Committee may also display the approximate compass bearing of the first leg.

9. MARKS

- 9.1. The start and finish marks will be a race committee vessel and **RED or ORANGE** ball. Course marks will be orange tetrahedrons.

10. THE START

- 10.1. The starting line is between a staff displaying an **ORANGE** flag on the race committee vessel at the starboard end and the course side of the port-end of the starting mark.
- 10.2. To alert competitors that a race sequence will soon begin, the race committee may make a signal at least one minute before a warning signal is made.
- 10.3. (NP)(DP) All Boats who's warning has not been made shall keep clear of the starting area.
- 10.4. Race Committee will attempt to hail the sail numbers of any OCS boat on VHF 72. This changes RRS 41. The failure of a boat to hear the hail, to hail of some, but not all OCS boats, the untimely hail of some or all OCS boats, or failure of any/all boats shall not be grounds for granting redress. The changes RRS 61.4(b).

11. THE FINISH

- 11.1. The finish line will be a staff displaying a **BLUE** flag on a race committee vessel and the course side of the nearby mark.

12. PROTEST AND REQUESTS FOR REDRESS

- 12.1. Protest forms are available on the regatta website captioned "General Race Forms".
- 12.2. For each class, the protest time limit is 90 minutes after the last boat has finished the last race of the day or the race committee signals no more racing today, whichever is later.

12.3. The intent of the Protest Committee is to schedule and conduct hearings via telephone or video conferencing within 24 hours of the expiration of the protest time limit. The Protest Committee will post a notice on the regatta website to inform competitors of the time of the hearing in which they are parties or have been named as a witness.

12.4. Notice of Protest by the race committee or protest committee will be posted to inform boats under RRS 60.2 (a) (2).

13. TIME LIMITS

13.1. If no boat reaches the first mark within sixty (60) minutes, that race shall be abandoned.

14. SCORING

14.1. The scoring will be Time on Distance, using WF PHRF buoy ratings for Spinnaker class, and Random Leg Course ratings for all other classes.

14.1.1. Only classes 1-3 will be scored. Class 4, Fun Class, will not be scored. This changes RRS A2.1.

15. SAFETY REGULATIONS

15.1. Competitors participate in this regatta entirely at their own risk. (See RRS 3: Decision to Race). Neither the organizing authority nor Race Officials will accept any liability for damage, personal injury or death sustained in conjunction with, prior to, during or after the regatta. The decision to race lies solely with the skipper and crew of each vessel.

15.2. (NP) Boats shall check in with the race committee before class warning either on channel 72, or by sailing past the stern of the signal boat with her mainsail hoisted, on a starboard tack and hailing her name, sail number and class until acknowledged by race committee. It is the responsibility of each vessel to confirm she has been identified.

15.3. (NP) A boat that retires from a race shall notify a race committee vessel at the first reasonable opportunity.

16. DISPOSAL OF TRASH (DP)

16.1. Boats shall not discharge trash into the water. The penalty for breaking this rule will be at the discretion of the protest committee, but less than disqualification.

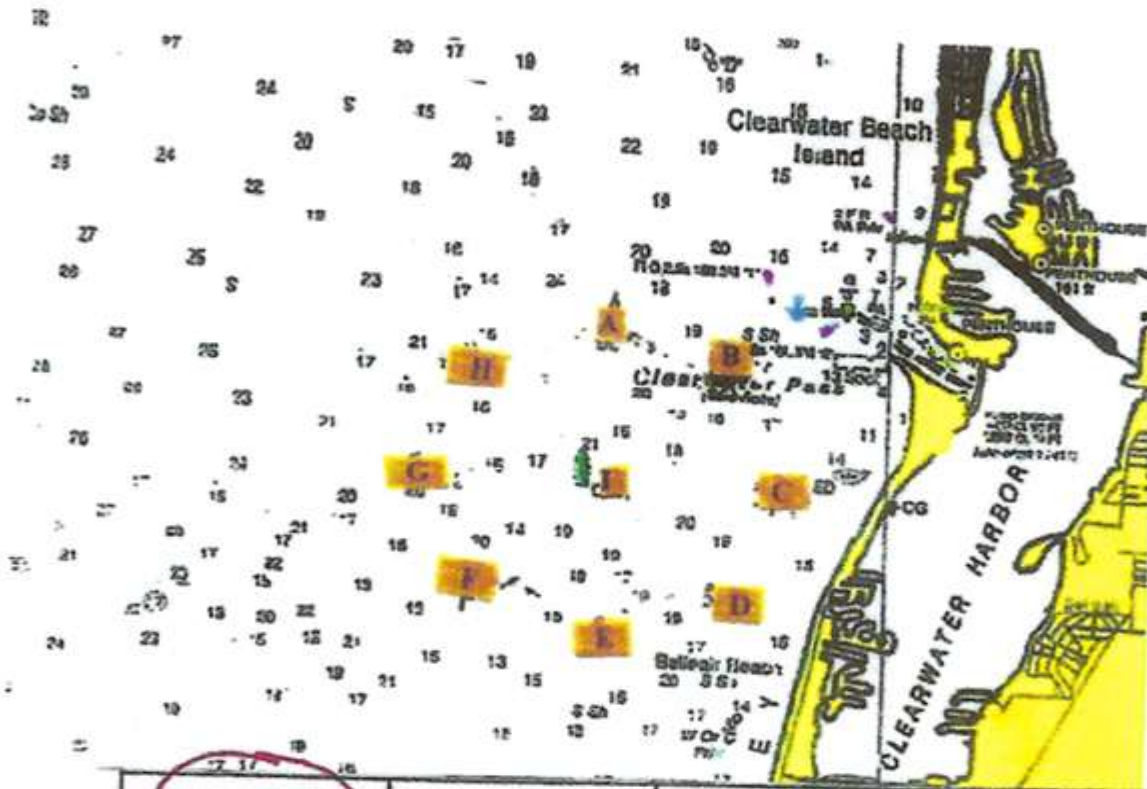
17. PRIZES

17.1. Prizes will be awarded for the top three places in each class. Based on the number of entries, classes may be divided into divisions, and then the top three prizes will be awarded to each.

18. FURTHER INFORMATION

18.1. For further information please access Yacht Scoring for on-line documents, or contact racing@dunedinboatclub.org or cycyachting@gmail.com or 813.833.2285 cell phone.

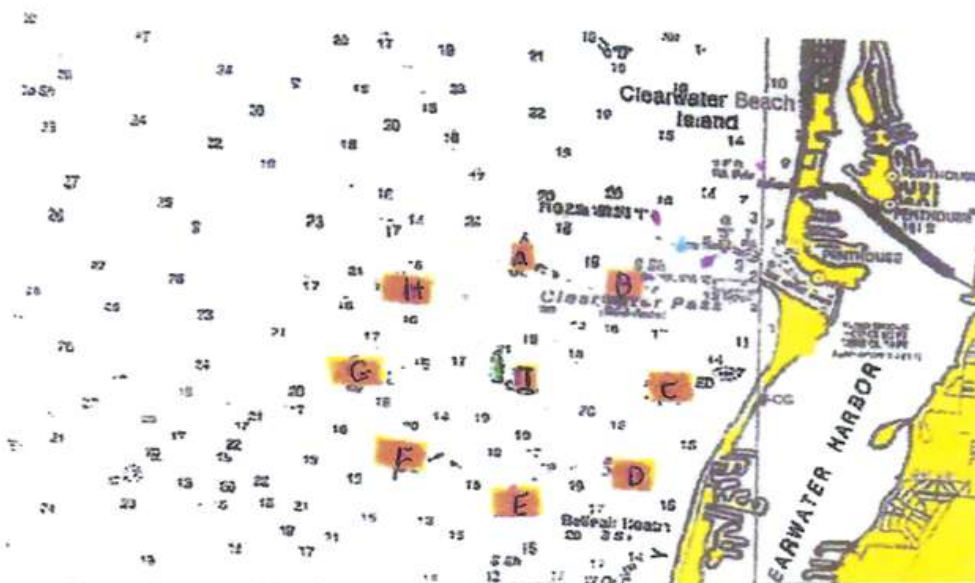
Appendix A



Mark #	Latitude	Longitude
A	27 58.0 N	082 52.0 W
B	27 57.7 N	082 51.2 W
C	27 57.0 N	082 50.9 W
D	27 56.3 N	082 51.2 W
E	27 56.0 N	082 52.0 W
F	27 56.3 N	082 52.8 W
G	27 57.0 N	082 53.1 W
H	27 57.7 N	082 52.8 W
I	27 57.0 N	082 52.0 W

1082

Appendix A



Race Courses Depending Upon Wind Strength and Direction

2 of 2

Wind Direction	Light wind (7 knots or less)		Medium to Heavy (8 knots +)	
N	N1	A-G-E-FINISH	N2	A-G-E-A-E-FINISH
NE	NE1	B-H-F-FINISH	NE2	B-H-F-B--F-FINISH
E	E1	C-A-G-FINISH	E2	C-A-G-C-G-FINISH
SE	SE1	D-B-H-FINISH	SE2	D-B-H-D-H-FINISH
S	S1	E-C-A-FINISH	S2	E-C-A-E-A-FINISH
SW	SW1	F-D-B-FINISH	SW2	F-D-B-F-B-FINISH
W	W1	G-E-C-FINISH	W2	G-E-C-G-C-FINISH
NW	NW1	H-F-D-FINISH	NW2	H-F-D-H-D-FINISH
Course are either a simple triangle or modified Olympic	The above courses are all simple triangles, approximately 5 miles in length		The above courses are modified Olympic, approximately 9 miles in length	