



# **MELGES**<sup>24</sup>

**2025 U.S. NATIONAL CHAMPIONSHIP**  
★ **BUSHWHACKER CUP**

November 12-16  
Pensacola Yacht Club ★ Pensacola, FL USA

# **SAILING INSTRUCTIONS**



## 1 NOTICE TO COMPETITORS. CHANGES TO THE RULES

---

- 1.1 Notices to Competitors will be posted on the Official Notice Board (ONB) that can be found here: [https://www.yachtscoring.com/notice\\_board\\_summary/50328](https://www.yachtscoring.com/notice_board_summary/50328)  
Competitors will be informed by text or email (indicated in the registration form) when a Notice to competitors is posted on the ONB.
- 1.2 Changes to the *rules* will be posted on the ONB before 0830am on the day it will take effect, except that any change to the schedule of races will be posted no later than 1900 on the day before it will take effect.
- 1.3 For an on the water change to the sailing instructions: "L" flag shall be displayed. The change will be announced on the designated VHF channel. (*This changes RRS Race Signals*)
- 1.4 Rule 60.4(a)(2) is changed as follows  
'if it alleges a breach of a rule of Part 2 or rule 31 but she was not involved in it, ~~or~~ **and** did not see, the incident, or'
- 1.5 The US Sailing Prescription - Appendix R will apply.

## 2 SIGNALS MADE ASHORE

---

- 2.1 Signals made ashore will be displayed from a flagpole in the Pensacola Yacht Club lawn.
- 2.2 When flag AP is displayed ashore, '1 minute' is replaced with 'not less than 30 minutes' in the race signal AP. (*This changes RRS Race Signals*)
- 2.3 The RC intends to broadcast its intentions for the day at 0900 each morning on channel 72 VHF.

## 3 CLASS FLAG

---

- 3.1 The Class flag used in accordance with RRS 26 will be the Melges24 logo on a light grey background.

## 4 THE COURSES

---

- 4.1 The course to be sailed will be a windward-leeward configuration. Offset and gate marks will be used.
  - Course 4: Start – 1 – 1a – 2S/2P – 1 – 1a – Finish (Downwind)
  - Course 5: Start – 1 – 1a – 2S/2P – 1 – 1a – 2S/2P – Finish (Upwind)
- 4.2 The illustrations in Attachment A show example course diagrams.
- 4.3 No later than the warning signal, the RC signal vessel will display the designated course by flying the corresponding numeral pennant. The approximate compass bearing and distance from the RC signal vessel to Mark 1 may be broadcasted on the designated VHF channel.
- 4.4 Marks 1 and 1a shall be rounded to port. Mark 1a is an offset mark and will be positioned to port of the associated windward mark (looking upwind).
- 4.5 A leeward gate (two marks) will be used. Boats shall sail between the gate marks from the direction of the previous mark and round either gate mark. If only one gate mark is set, boats shall round the single mark to port. Except when there is a change of course, the gate will be positioned approximately 0.1nm to windward of the RC signal boat. The gate may be laid after the starting signal.
- 4.6 Except when there is a change of course:
  - (a) the downwind finishing line for course 4 will be to leeward of the gate and adjacent to the RC signal vessel;
  - (b) the upwind finishing line for course 5 will be to windward of mark 1.

## 5 MARKS

---

- 5.1 Marks 1, 2S and 2P will be orange inflatable tetrahedrons.
- 5.2 Mark 1a will be a red ball.
- 5.3 New marks used according to SI 7 will be yellow inflatable tetrahedron.
- 5.4 The starting marks will be either RC vessels with an orange flag or the RC Signal Vessel and a green inflatable mark.



- 5.5 The finishing marks will be either RC vessels with a blue flag or the RC Signal Vessel and a green inflatable tetrahedron mark.
- 5.6 A RC vessel signalling a change of course, according to SI 7.1, is an obstruction. The penalty for touching the RC vessel signalling a change of course will be a One-Turn Penalty (*This changes RRS 44.1*).

## 6 THE START

---

- 6.1 The starting line will be between the staffs displaying orange flags on the starboard end RC signal vessel and the port end RC line vessel, or the starboard end RC Signal vessel and the course side of the green inflatable tetrahedron mark on the port end.
- 6.2 To alert boats that a race will begin soon, an **ORANGE** flag will be displayed at least **1 minute** before a warning signal is displayed. This flag will be removed approximately 5 minutes after a valid start with no sound signal.
- 6.3 The Vakaros RaceSense system will be used by the Race Committee and the relevant information will be available to all boats.
- 6.4 The visual identification of boats infringing RRS 29 and RRS 30 by the Race Committee is replaced with the electronic identification by the Vakaros RaceSense system. (*This changes RRS 29.1, 30.1, 30.2, 30.3 and 30.4*)
- 6.5 **[NP]** Any kind of failure of an Atlas 2, the RaceSense system or communication systems shall not be grounds for a request for redress by a boat or a Committee. (*This changes RRS 41(c) and 61.1 a)*)
- 6.6 If RC displays a G (Golf) flag with one short sound before the warning signal, SIs from 6.3 to 6.5 will not apply.
- 6.7 When E (Echo) flag is displayed with one long sound on the RC Signal Vessel means: "All boats are required to reboot the Vakaros device. The warning signal for the next race will not be displayed until the E (Echo) flag is removed."
- 6.8 **[SP]** A boat starting later than four (4) minutes after her starting signal will be scored Did Not Start without a hearing.
- 6.9 RRS 30.4 (Black Flag Rule) is changed to permit the RC to display bow number and/or sail number.

## 7 CHANGE OF THE NEXT LEG OF THE COURSE

---

- 7.1 To change the next leg of the course, the RC will lay a new mark (or move the finishing line) and remove the original mark as soon as practicable. When in a subsequent change a new mark is replaced, it will be replaced by an original mark. At the weather mark, the RC will make every effort to set an offset mark with a change mark, however, if it is absent, proceed to the next mark of the course from the weather mark.
- 7.2 Any adjustment of any leg of the course, while boats are racing, by moving mark(s) up to 010° in bearing and/or 0.1 nm in length will not be considered a change of course. (*This changes RRS 33*)

## 8 THE FINISH, TIME LIMITS AND TARGET TIMES

---

- 8.1 For both upwind and downwind finishes, the finishing line will be between a staff displaying a blue flag on the finishing line vessel and a staff displaying a blue flag on a nearby RC vessel or the course side of a nearby green inflatable tetrahedron mark.
- 8.2 The time limit for the first boat to sail the course will be 2 hours after the start of her fleet.
- 8.3 The time limit for the first boat to round Mark 1 for the first time after the start of her fleet is 30 minutes.
- 8.4 Boats failing to sail the course within 30 minutes after the first boat sails the course, and not thereafter retiring, being penalized, or given redress, will be scored DNF. (*This changes RRS 35, A5.1, A5.2 and A10*)
- 8.5 The target time for a race is 45 to 60 minutes. Failure to meet the target time will not be grounds for a request for redress. (*This changes RRS 61.1(a)*)
- 8.6 Flag A displayed at the finish means "no more racing today."



## 9 HEARING REQUESTS

---

- 9.1 The Protest Time Limit (PTL) shall be **sixty (60) minutes** after the last boat has finished the last race of the day or the RC signals no more racing today, whichever is later. The resulting time will be posted at the Official Notice Board Online.
- 9.2 Hearing requests shall be delivered at the following <https://yachtscoring.com/emenu.cfm?eID=50328> within the appropriate time limit.
- 9.3 Notices of scheduled protests or requests for redress hearings will be posted on the Official Notice Board Online to inform competitors of hearings in which they are parties or may be parties affected by a request for redress.
- 9.4 Notices will be posted on the ONB **not later than 30 minutes** after the protest time limit to inform competitors of hearings in which they are parties or named as witnesses. Hearings will be held in the protest room, beginning at the posted time.
- 9.5 Within the protest time limit, the RC shall post on the ONB the boats that are disqualified or penalized under A5. A boat so notified may only request for redress within 30 minutes after that posting.
- 9.6 Notices of protests by the RC or the Protest Committee will be posted on the ONB to inform boats under rule 60.2 (a)(2).

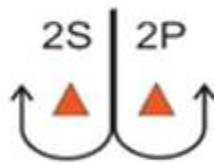
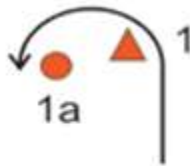
## 10 REPLACEMENT OF CREW OR EQUIPMENT

---

- 10.1 Substitution of competitors will not be allowed without prior written approval of the Regatta Chair, Tom Pace (OA). Competitors desiring to substitute crew shall have crew members weighed-in prior to 0830 on that race day at the Race Office, unless otherwise extended by the Regatta Chair, Tom Pace (OA).
- 10.2 Substitution of equipment will not be allowed unless authorized by the OA. Requests for substitution shall be made to the OA at the first reasonable opportunity.
- 10.3 Any substitution granted via SI 10.1 or 10.2 will be posted on the Official Notice Board Online.



# Attachment A - COURSE DIAGRAM



**Pennant 4 / Course 4**

Start – 1 – 1a – 2S/2P – 1 – 1a – Finish (Downwind)



**Pennant 5 / Course 5**

Start – 1 – 1a – 2S/2P – 1 – 1a – 2S/2P – Finish (Upwind)