



# **MELGES**<sup>24</sup>

**2025 U.S. NATIONAL CHAMPIONSHIP**

★ **BUSHWHACKER CUP**

November 12-16

Pensacola Yacht Club ★ Pensacola, FL usa

# **NOTICE of RACE**



The Organizing Authority (OA) is Pensacola Yacht Club in conjunction with The US Melges 24 Class Association (USM24CA)

## 1. RULES

---

- 1.1. The regatta will be governed by the rules as defined in The Racing Rules of Sailing (RRS), and
- 1.2. **[DP]** Event Support Team Regulations (ESTR) that can be found in Attachment D of this NoR.
- 1.3. US Sailing Prescriptions will not apply except the prescriptions to the following rules: Preamble to part 5, 65.1, 70.3 (b), 76.1 and 88.2. Prescriptions that apply can be found in Attachment B of this NoR.
- 1.4. Addition to RRS 60.2 (a):
  - (3) "if the protestor is a boat, she shall inform the Race Committee at the finishing line immediately after finishing, or to a Committee as soon as practicable after she retires, of the boat(s) being protested".
- 1.5. RRS 90.3 (e) will apply and the expression "24 hours" is changed to "30 minutes".
- 1.6. **[SP]** denotes a rule for which a standard penalty may be applied by the Race Committee or Technical Committee without a hearing. The penalty for breaking rules marked as [SP] will be 25% of entries applied to the closest race to the moment of the incident. *(This changes RRS A5.1).*
- 1.7. **[NP]** denotes a rule that shall not be grounds for protest by a boat and for which the Protest Committee may refuse to hold a hearing. *(This changes RRS 60.1, and 63.2 (a)).*
- 1.8. **[NP] [DP]** All the sailors and support person shall follow any reasonable instruction given by a race officer.

## 2. GREEN REGATTA

---

- 2.1 The Melges24 National Championship – Bushwhacker Cup is a Sailors for the Sea "Clean Regatta" which means that any document used by the OA, RC, Protest Committee (PC), Technical Committee (TC) and Competitors as a way of communication between them will be online.
- 2.2 All communications will be received by each boat in the way established in the Registration Form (email or sms).
- 2.3 A boat may request a communication in paper format only if she is a party in the Protest or Request for redress.
- 2.4 **[NP] [DP]** Rule RRS 47 applies at all times on the water and ashore. Trash may be placed aboard support and RC Vessels while on the water and trash cans. The penalty for breaching rule RRS 47 will be decided by the PC and could be different than a disqualification. *(This changes Preamble of part 4 RRS and rule RRS 47)*
- 2.5 All competitors are encouraged to use refillable water bottles and recycle all appropriate items.

## 3. ELIGIBILITY AND ENTRY

---

- 3.1 The regatta is open to all boats of the Melges 24 class that meet the obligations of the Class Rules and, when relevant, their Member National Authority.
- 3.2 Eligible boats may enter by completing online registration at [https://www.yachtscore.com/event\\_registration\\_email/50328](https://www.yachtscore.com/event_registration_email/50328) no later than November 7<sup>th</sup>, 2025. Entries may be accepted after this date only with approval by the OA on a case-by-case basis.
- 3.3 Only boats that have completed all registration requirements will be allowed to compete. **Note – completed entry includes payment of entry fee.**
- 3.4 The OA will acknowledge completed entries upon receipt via email and post on the official event web site at <https://www.yachtscore.com/emenu/50328>
- 3.5 **[NP] [DP]** As a condition of entry, boats shall not be hauled out during the regatta between 1000 hours, November 14<sup>th</sup>, 2025, and the end of the regatta except with and according to the terms of prior written permission of the RC.
- 3.6 The World Sailing Sailor Classification Code (Regulation 22) will apply to teams in the Corinthian Trophy.
- 3.7 Classification for each sailor and the unique World Sailing sailor ID shall be indicated on the entry form if entering for the Corinthian Trophy.
- 3.8 Each boat shall produce a valid measurement certificate before the close of registration, November 13<sup>th</sup>, 2025.



- 3.9 **[NP] [DP]** Each participating boat shall be insured with valid third-party liability insurance with a minimum cover of \$500,000 (USD) per event or the equivalent.
- 3.10 Liability Waiver Form - As a condition of entry, each owner, skipper and individual participating crewmember shall sign a liability waiver/media release. The fully executed Liability Waiver Form shall be submitted at registration prior to racing. The Liability Waiver Form will be posted on the regatta website and will be available at registration.
- 3.11 Following to WS's statement, competitors from Russia (RUS) and Belarus (BLR) are not eligible for this regatta.
- 3.12 Boats, support persons and support vessels are required to register with the Race Office no later than 1800pm on November 13<sup>th</sup>, 2025.

#### 4. ADVERTISING

---

- 4.1 Advertising will conform to World Sailing Regulation and the Class Rules.
- 4.2 Boats may be required to display sponsors' advertising for the duration of the event chosen and supplied by the OA.

#### 5. EQUIPMENT INSPECTION

---

- 5.1 The TC may weigh, measure, or inspect any boat and or her equipment and sails before, during, or after the races.
- 5.2 Registration of sails and limitation stamping will take place during periods stated in NOR 9.
- 5.3 **There will be no facilities for initial measurement.** Sails shall be measured and stamped by an approved measurer before arrival at the Regatta.
- 5.4 **[NP]** A boat chartered or loaned for this event may carry national letters or a sail number in contravention of the Class Rules.
- 5.5 **[DP] [NP]** Each boat shall have a working Vakaros Atlas 2 configured for RaceSense at check-in, which shall be mounted on the aft side of the mast at all times while racing. Each boat shall either provide a working Atlas 2 at check-in for configuration with RaceSense, or an Atlas 2 will be provided to any boat that does not have one available.
- 5.6 **[DP] [NP]** Competitors shall do their best to keep the system safe and active. They shall inform the Vakaros staff as soon as possible, on the water or ashore, about any problems encountered with the device.

#### 6. COMMUNICATION

---

- 6.1 Notices to competitors will be posted on the Official Notice Board Online (ONB) at <https://www.yachtscoring.com/emenu/50328>
- 6.2 **[DP]** All boats shall carry a VHF radio capable of communicating on channel 72. Channels 68, 69, and 71 may be used.
- 6.3 **[DP]** From the first warning signal until the end of the last race of the day, except in an emergency or as required by a rule, a boat shall not make voice nor data transmissions and shall not receive voice nor data communication that is not available to all boats.
- 6.4 The RC may broadcast on the designated VHF Channel:
- the course, bearing and distance information before the warning signal, start times, course changes and any other information important to racing.
  - Individual recalls and boats penalized under RRS 30.2 or RRS 30.3 using bow/sail numbers. (This changes RRS 29.1, 30.2 and 30.3)
- 6.5 Any failure of a boat to receive or properly interpret the information or an action of the RC acting under NoR 6.4 will not be grounds for request a redress (*This changes RRS 61.1(a)*)
- 6.6 The Organizing Authority (OA) will include the Vakaros Atlas 2 RaceSense as required equipment for this event. Each boat shall either provide a working Atlas 2 at check-in for configuration with RaceSense, or an Atlas 2 will be provided by the Organizing Authority (OA) for a fee. Please, see Attachment C for more information.



**7. FEES**

- 7.1 The Entry Fee will be:
  - a) **\$650** up to October 10<sup>th</sup>, 2025
  - b) **\$750** from October 11<sup>th</sup>, 2025 onwards. This will apply to all boats registering after October 11<sup>th</sup>, 2025 or for all boats who have registered but not paid their entry fee by October 11<sup>th</sup>, 2025.
- 7.2 Entry Fee includes launching at commencement and recovery at conclusion of the Regatta at designated times, berthing at the regatta harbor for the dates of the event, trailer storage, hospitality to the events for all competing crew.
- 7.3 Payment of entry fees may be made by observing the guidelines for online registration.

**8. CREW LIMITATION**

- 8.1 The World Sailing Sailor Classification Code will apply to teams competing for the Corinthian Trophy (see RRS 79).
- 8.2 For boats that qualify for the Corinthian division, sailors shall submit a Corinthian Declaration Form that includes sailor classifications, World Sailing sailor ID numbers and date of expiration to USM24CA administration no later than November 7<sup>th</sup>, 2025, by emailing to [communications@usmelges24.com](mailto:communications@usmelges24.com). The Corinthian Declaration Form is posted online at: <https://usmelges24.com/corinthian-declaration-form>
- 8.3 Entries accepted after November 1<sup>st</sup>, 2025, shall not be eligible for the Corinthian Trophy and will sail in the open division.
- 8.4 Full details for the Corinthian Trophy can be found in the IM24CA Championship rules that can be found at: <https://www.melges24.com/im24ca-corinthian-division>
- 8.5 Protests regarding World Sailing classification may be submitted starting November 7<sup>th</sup>, 2025. Such protests will be handled by the USM24CA office, whose decision is final.
- 8.6 Should a boat whose Corinthian entry has been checked and accepted need to change a crew member between the closing date of entries and the start of the regatta, the name of the new crew member with their valid World Sailing sailor ID and group number shall be submitted to the OA for approval by the USM24CA Championship Representative.

**9. SCHEDULE**

9.1 The program is as follows:

DAY	DATE	TIME(s)	EVENT
Wednesday	November 12 <sup>th</sup> , 2025	1600 - 1900	Registration
Thursday	November 13 <sup>th</sup> , 2025	1300	Practice Race
		1600 – 1800	Registration
		1800	Opening Ceremony
		1830	Competitors' Meeting
Friday	November 14 <sup>th</sup> , 2025	1100	First Warning Signal Competitors'
		1700	Dinner
Saturday	November 15 <sup>th</sup> , 2025	1100	First Warning Signal
Sunday	November 16 <sup>th</sup> , 2025	1000	First Warning Signal
		1500	No Warning after this time
		ASAP after races	Awards

- 9.2 Twelve (12) races are scheduled for the regatta.
- 9.3 The RC shall attempt to complete four (4) races per day.
- 9.4 The OA reserves the right to modify the program due to weather conditions or other causes.



## 10. VENUE – RACING AREA

---

- 10.1 The venue host address: Pensacola Yacht Club, 1897 Cypress St., Pensacola, FL 32502.
- 10.2 The location of the racing area is on Pensacola Bay, Southeast of the entrance to Bayou Chico. See Attachment A.

## 11. PENALTY SYSTEM

---

- 11.1 RRS Appendix T will apply.
- 11.2 Rule 44.1 is changed as follows: A boat may take a One-Turn Penalty when she may have broken a rule of Part 2 or Class Rule C.11 while racing. However, when she may have broken a rule of Part 2 while in the zone around a mark other than a starting mark, her penalty shall be a Two-Turns Penalty.
- 11.3 Unless the course is shortened to finish at the windward mark, penalties while in the zone of the windward mark or on the offset leg may be delayed and taken as soon as possible on the downwind leg. (*This changes RRS 44.2.*)

## 12. SCORING

---

- 12.1 One (1) race is required to be completed to constitute the regatta.
- 12.2 When fewer than six (6) races have been completed, a boat's series score will be the total of her race scores.
- 12.3 When six (6) or more races have been completed, a boat's series score will be the total of her race scores excluding her worst score.

## 13. SAFETY

---

- 13.1 **[DP]** Before the first warning signal of each day, all boats shall sail past the stern of the RC Signal Vessel on starboard tack and check in by hailing their sail/bow number. They shall continue to do so until their sail/bow number is verbally acknowledged by the RC.
- 13.2 Except in an emergency, all Melges 24 boats shall proceed to and from the racing area under their own power.
- 13.3 **[DP] [NP] [SP]** A boat that retires from a race shall notify the RC before leaving the course area or immediately after arriving ashore via radio contact from PYC (Regatta Director or PYC staff).
- 13.4 **[NP]** A boat and its crew shall at all times keep clear of all commercial vessels and shall not maneuver in any manner which would cause a commercial vessel to be unable to sail their proper course or carry out their commercial functions in a normal manner.
  - 13.4.1 **[NP]** A boat whose actions or maneuvers result in a Danger Signal (5 Horns or Sounds) from a commercial vessel, shall be protested.
  - 13.4.2 A boat in violation of SI 13.4 can only be protested by the RC. (*This Changes RRS 60.1*)
  - 13.4.3 The penalty for breaking this SI 13.4 shall be disqualification from the entire regatta in which case rule RRS 36 will not apply. (*This changes RRS 36*)

## 14. LAUNCHING AND BERTHING

---

- 14.1 The PYC hoist and launch ramp will be available on demand. Please coordinate with fellow competitors.
- 14.2 **[DP]** Except when sailing, all boats shall be kept in their assigned docks in the PYC harbour. Fenders and mooring lines will be required.

## 15. PRIZES

---

- 15.1 Prizes will be given to the top 5 teams overall.
- 15.2 Other prizes from the OA will be posted in the Notice Board.



## 16. DISCLAIMER OF LIABILITY

---

- 16.1 Competitors participate in the event entirely at their own risk. See RRS 3, Decision to Race. The OA will not accept any liability for material damage or personal injury or death sustained in conjunction with or prior to, during, or after the regatta.
- 16.2 Sailing is by its nature an unpredictable sport and therefore inherently involves an element of risk. By taking part in the event, each competitor and the responsible adult agree and acknowledges that:
- They are aware of the inherent element of risk involved in the sport and accept responsibility for the exposure of themselves and their boat to such inherent risk whilst taking part in the event;
  - They are responsible for the safety of themselves, their boat and their other property whether afloat or ashore;
  - They accept responsibility for any injury, damage or loss to the extent caused by their own actions or omission;
  - Their boat is in good order, equipped to sail in the event and they are fit to participate;
  - The provision of a race management team, patrol boats and other officials and volunteers by the event organizer does not relieve them of their own responsibilities;
  - The provision of patrol boat cover is limited to such assistance, particularly in extreme weather conditions, as can be practically provided in the circumstances.

## 17. MEDIA RIGHTS AND MEDIA VESSELS REGULATIONS

---

- 17.1 By participating in this event, competitors automatically grant to the OA and the event sponsors the right, in perpetuity, to make, use, and show, at their discretion, any photography, audio and video recording, and other reproductions of them made at the venue or on the water from the time of their arrival at the venue, until their final departure, without compensation.
- 17.2 All Press and official spectator boats shall be registered by the race organizing authority during registration.
- 17.3 Press and spectator vessels shall display any flag, or other identification symbol as may be required by the Race Committee.
- 17.4 The race organizers may appoint one or more photo vessels, which will be allowed within the race course. The position of these boats shall not be grounds for redress. (*This changes rule RRS 62.1*)
- 17.5 Press and spectator vessels shall not interfere with boats racing or the Regatta Direction in any way.

## 18. KEY CONTACTS

---

### REGATTA CHAIR

Name: Tom Pace

E-mail: [tomracechair@gmail.com](mailto:tomracechair@gmail.com)

### PRINCIPAL RACE OFFICER (PRO)

Name: Hal Smith

Email: [hal\\_smith@mindspring.com](mailto:hal_smith@mindspring.com)

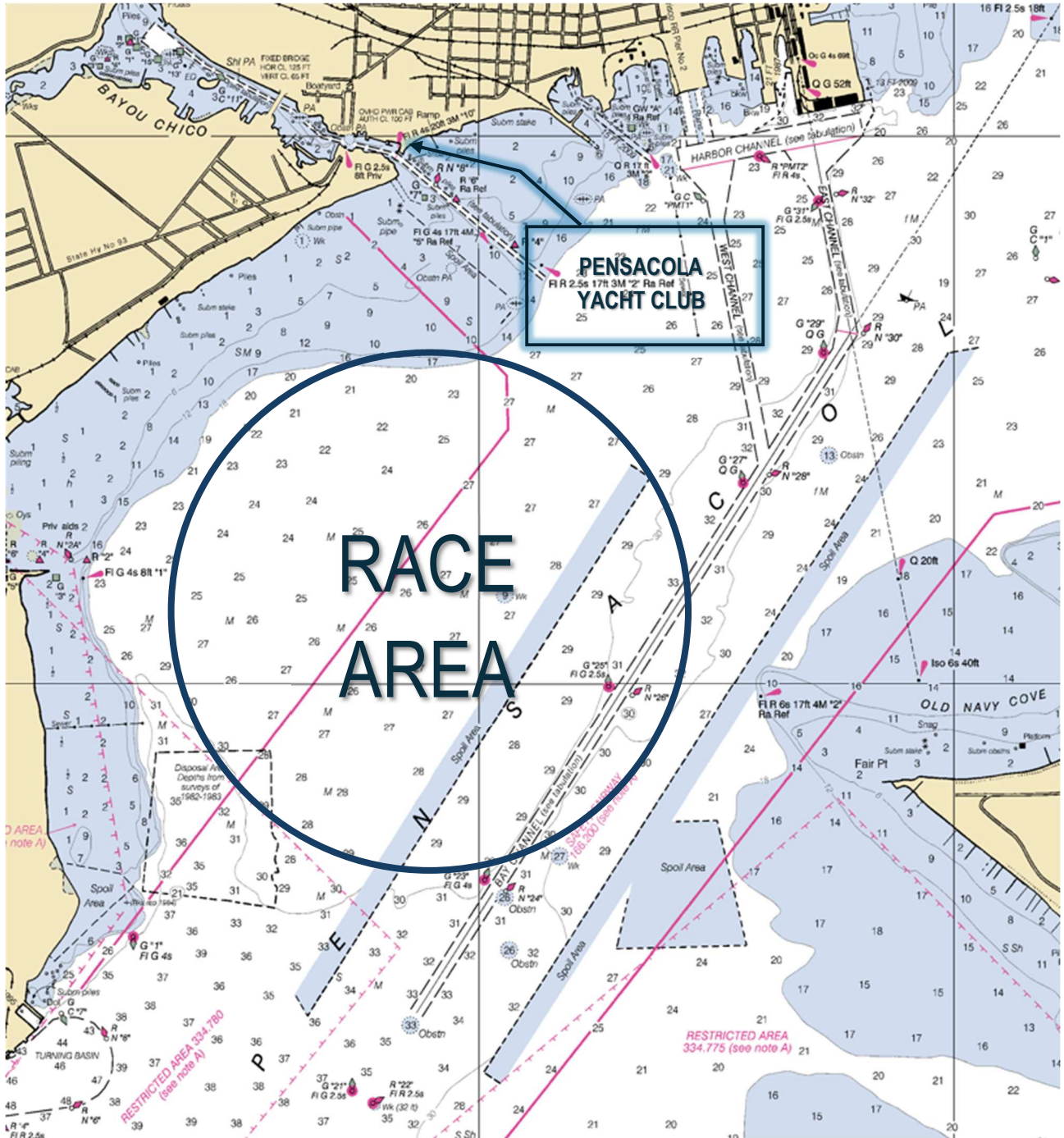
### US Melges 24 Class Admin

Name: Joy Dunigan

Email: [communications@usmelges24.com](mailto:communications@usmelges24.com)



# Attachment A Race Area





# Attachment B

## US Sailing Prescriptions that apply

### Prescription to RRS Preamble to Part 5

US Sailing prescribes that no fees shall be charged for protests or requests for redress.

### Prescription to RRS 65.1 US

Sailing prescribes that

- (a) A boat that retires from a race or accepts a penalty does not, by that action alone, admit liability for monetary damages.
- (b) A protest committee shall find facts and make decisions only in compliance with the rules. No protest committee or US Sailing appeal authority shall adjudicate any claim for monetary damages. Such a claim is subject to the jurisdiction of the courts
- (c) A basic purpose of the rules is to prevent contact between boats. By participating in an event governed by the rules, a boat agrees that responsibility for monetary damages arising from any breach of the rules shall be based on fault as determined by application of the rules, and that she shall not be governed by the legal doctrine of 'assumption of risk' for monetary damages resulting from contact with other boats.

### Prescription to RRS 70.3(b)

US Sailing prescribes that its approval is required. Go to [ussailing.org/rules](https://ussailing.org/rules) and click the 'No Appeal' link for more information or to obtain approval.

### Prescription to RRS 76.1

US Sailing prescribes that an organizing authority or race committee shall not reject or cancel the entry of a boat or exclude a competitor eligible under the notice of race and sailing instructions for an arbitrary or capricious reason or for reason of race, color, religion, national origin, gender, sexual orientation, or age. However, an organizing authority or race committee may exclude a competitor who is a citizen of, or holds a World Sailing ID as an MNA member of, a country listed on the US Sailing website under 'Exclusion' at [ussailing.org/rules](https://ussailing.org/rules).

### Prescription to RRS 88.2

US Sailing prescribes that the notice of race or sailing instructions may change or delete any prescriptions except: this prescription, Appendix R, the prescription to the preamble to Part 5, and the prescriptions to rules 65.1, 70.3(b) and 76.1.



# Attachment C

## RaceSense

Hello from the Vakaros team!

We're reaching out with some pre-event logistics to make sure RaceSense runs as smoothly as possible at this year's Melges24 – Nationals / Bushwhacker Cup.

For all teams:

- Each team will need to check in with Vakaros with their Atlas 2 in hand, or to receive their loaner unit.
- Check-in should take five to ten minutes and will be open at the event registration desk.
- Atlas 2 instruments MUST be mounted aft facing, on the mast, and above any other instruments (including BG Displays).

If you already own an Atlas 2:

- Update your unit to the latest firmware version (19.4) via the Vakaros Connect App. This firmware version will be available by 11/7 at 1800. For a video on how to update your firmware, see here: [Atlas 2 Firmware Update Tutorial](#).
- Calibrate your compass by following these steps: [Atlas Compass Calibration](#)

If you are renting an Atlas 2 for the event (anyone who does not own one):

- Vakaros will provide you with an instrument. It will display magnetic heading, SOG, heel/trim, DTL as well as an automatic countdown start timer and OCS status.
- Rental devices will be available for pickup beginning 11/8.
- All rental devices will be returned to the Vakaros table within the protest time limit on the final day of racing.
- Rental devices are available for reservation here: [A2 Event Rental](#)

In the meantime, check out our [RaceSense Sailor Manual](#), and our tips for your [First RaceSense Event](#).

We can't wait for this great event! Find some RaceSense FAQs on the next page, and we'll see you on the water. If there's anything we can help with in the meantime, reach out to [will@vakaros.com](mailto:will@vakaros.com) Best,

Will Huerth

Sales Director, Vakaros

---

### Melges24 – Nationals / Bushwhacker Cup RaceSense FAQ

#### What functions will RaceSense perform automatically?

RaceSense will automatically start your timer, display DTL without pinging and provide notification, within a second after the start, of if a team is OCS or not.

#### Will RaceSense clear the start line?

Yes! When you've cleared the line, or an infinite extension of the line, the device will show green lights and say "clear". It is still your responsibility to restart, as per the rules, if you clear the extension of the line beyond the RC Signal or Pin boat. For boats that have not yet cleared their OCS, the Atlas 2 will display "OCS" for 4 minutes, after which point, clearing is no longer an option.

#### I'm arriving outside of the available check-in windows. What can I do?

Please reach out to [will@vakaros.com](mailto:will@vakaros.com) if you have any concerns about check-in timing. We are happy to work with you to find a better time.

#### I'm renting a device: what will I receive?

Atlas 2, Atlas 2 bracket, Qi Wireless Charging Pad, Micro-USB charging cord, 2x Velcro straps



# Attachment D

## Event Support Team Regulations (ESTR)

### 1. GENERAL

---

- 1.1 These Event Support Team Regulations (ESTR) apply at all times while support persons are at the event venue, ashore, on the racing area or on their way to or from the racing area.
- 1.2 These ESTR apply from 1200pm on Tuesday, November 11<sup>th</sup>, 2025 to 0800pm on Sunday, November 16<sup>th</sup>, 2025.
- 1.3 For the purpose of these regulations 'support person vessel' means any vessel that is under the control or direction of a person who does or may provide physical or advisory support to a competitor, including the collection of data that may be used later.
- 1.4 The Organizing Authority may inspect support person vessels at any time to ensure that they comply with these regulations, and the person responsible for the vessel shall facilitate such inspection.
- 1.5 The Organizing Authority may change these regulations at any time. Any changes will be published on the Official Notice Board located on the event website.
- 1.6 The Organizing Authority or the Race Committee may, at their discretion, refuse to register support person vessels not deemed to be suitable. Generally, open vessels more than 4.0m and less than 7.5m in length and having minimal or no superstructure (cabin, coach house, bridge, etc.) are considered suitable.
- 1.7 Support persons and Support Vessels shall register with the race office during registration times. They shall declare which boat or boats to which they are attached. Support persons and support vessels shall provide photo ID of the driver(s). Vessels shall comply with local laws and regulations regarding their operation. The Organizing Authority or the Race Committee may refuse registrations at their sole discretion.
- 1.8 For safety reasons, all other passengers of support person vessels shall be registered at the race office before going afloat. Only a registered support person may be a designated driver.
- 1.9 The person registering the support person vessel shall confirm that:
  - a) a valid insurance certificate showing proof of third-party liability coverage as required by the Notice of Race exists;
  - b) each designated driver has a motorboat driving license recognized by a national authority appropriate to the vessel and the shipping waters.
- 1.10 Support person vessels shall be marked as follows:
  - 1.10.1 Support person vessels shall display an identification flag provided by the Organizing Authority clearly visible at all times while afloat.

### 2. SAILING VENUE

---

- 2.1 Only registered support person vessels will be allowed into the sailing venue.
- 2.2 Support person vessels shall use the designated slipway/area for launching. Once launched, trailers shall be moved immediately to the trailer park directed by the Organizing Authority.
- 2.3 When not in use, support person vessels shall be appropriately berthed at the sailing venue in the designated areas for support person vessels, as shown in SI Addendum 'Harbour Map and Locations', or as directed by the Organizing Authority.
- 2.4 Support person vessels shall not use the dinghy launching slipways, jetties or other pontoons outside the support person vessel area for any purpose whatsoever, including mooring, launching and retrieval, and loading and unloading of equipment except as permitted by these ESTR.



### **3. SAFETY**

---

- 3.1 Support persons and other passengers on board of support person vessels shall wear personal flotation devices at all times while afloat, except briefly while changing or adjusting clothing or personal equipment.
- 3.2 Support person vessel drivers shall always the kill cord attached while the engine is running.
- 3.3 Support person vessels shall carry on board:
  - life jackets/personal flotation devices for all passengers and the driver;
  - VHF radio
  - first-aid kit;
  - device for making sound signals;
  - compass;
  - adequate anchor and tackle for conditions and depth;
  - tow rope (minimum 15m long and 10mm diameter);
  - operational engine kill cord (also known as a safety lanyard or automatic engine immobilizer);
  - hand pump or bailer;
  - knife;
  - red-white-striped hazard tape;
  - any additional safety equipment required by local maritime law.
- 3.4 The maximum plated/certified passenger limits for the vessel shall not be exceeded.
- 3.5 At all times, support persons including the registered driver(s) of a support person vessel shall comply with directions given by or under the authority of a race official. This includes assisting in rescue operations when requested to do so.
- 3.6 Support person vessels shall comply with local harbour and marina regulations, in particular speed limits.

### **4. GENERAL RESTRICTIONS**

---

- 4.1 The registered driver(s) of a support person vessel shall be responsible for the control of the vessel at all times and will be held responsible for any inappropriate behaviour, dangerous actions or improper practices, or actions affecting the fairness or safety of competition.
- 4.2 Support persons shall not leave any device, piece of equipment, buoy, marker or similar item permanently in the water. Temporary use of floating objects is allowed for current measurement. These objects shall be removed from the water as soon as the measurement has been taken.
- 4.3 Support person vessels shall take particular care to minimize their wash when transiting the racing areas.

### **5. RACING AREA RESTRICTIONS**

---

- 5.1 Support person vessels shall not be positioned:
  - 5.1.1 Closer than 100 meters of any boat racing.
  - 5.1.2 Within 100 meters of the starting line and starting marks from the time of the preparatory signal until all boats have left the starting area, or the race committee signals a postponement, general recall or abandonment.
  - 5.1.3 Between any boat racing and the next mark of the course.
  - 5.1.4 Within 100 meters of any mark of the course while boats are in the vicinity of that mark.
  - 5.1.5 Within 100 meters of the finishing line and finishing marks while boats are finishing.
- 5.2 In addition, support person vessels that are motoring above 5 knots shall maintain a distance of at least 150 meters from any boat racing.
- 5.3 No drones are allowed closer than 500 meters from racing areas from the Warning Signal for a race and after the last boat has finished the race. As a penalty for breaching this rule the protest committee may impose a discretionary penalty to all boats associated with the owner / operator of the drone. This rule does not apply to the OA drones.



- 5.4 There shall be no transfer of any goods or equipment until after the finish of the last race of the day between Melges 24 and their support vessels.
- 5.5 Except in an emergency or when RRS 37 applies, support persons shall not communicate with competitors (by any means) from the time they leave the dock until completion of the final race of each day (*This changes Preamble of Part 4*).

## **6. COMMUNICATION**

---

- 6.1 On the water, the race committee may use VHF radio for courtesy broadcasts and search and rescue instructions under RRS 37. The channels will be published on the Official Notice Board. Under all circumstances, support vessels are expected to assist any boat in danger.